

**OFFICIAL**

**CITY**

**PROGRAMME**





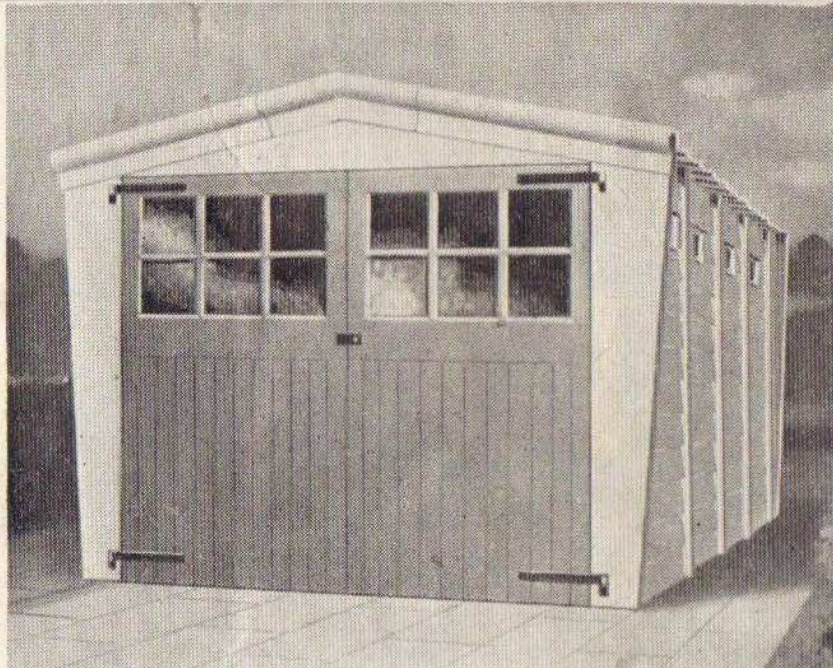
# BANBURY

## CONCRETE GARAGES

30 MODELS  
from

**£48.16.0**  
or 9/5 weekly

This is the Bicester, a superb new design with extra width and extra length. Available with Traditional Timber doors as shown, or the famous Banbury aluminium "Glide Over" door.



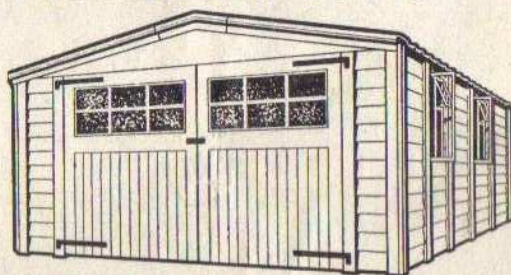
### ANOTHER NEW MODEL!



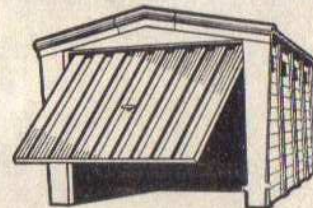
#### POPULAR

Will house all popular makes of car. Available with the famous "Glide-Over" self-opening door or Traditional Timber doors.

Please write for  
GARAGE leaflets



The New Burford is a really wonderful family garage—for the largest of cars and lots of other things. Will take two of the smaller cars. The finest garage we've ever produced.



#### BICESTER

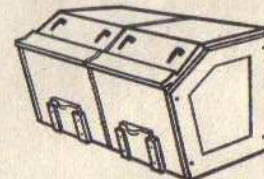
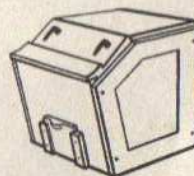
Here the Bicester garage is shown with a "Glide-Over" door which is available on all models.

The unique Banbury interlocking system really is the easiest self-assembly on the market to-day.

#### THE BANBURY COAL BUNKER

The perfect concrete coal bunker. Raked design and Banbury "Easi-top" gives easy access and delivery—no over-spill or waste. 5-min. assembly. 9, 13, 17 cwt., etc. Price £6.9.0d. plus carr. Write for BUNKER leaflet.

DOUBLE BUNKER £12.8.6d. plus carr.



## PORTABLE CONCRETE BUILDINGS LTD.

AYNHO ROAD, ADDERBURY, BANBURY. TEL.: ADDERBURY 331/2/3

BUY BANBURY — YOU'LL BE AS PROUD OF IT AS WE ARE!

Branches: 30, KING WILLIAM STREET, COVENTRY. Telephone 3546

30a, QUEEN'S ROAD, NUNEATON. Telephone 3181

## D. Di MASCIO & Co. Ltd.

Wholesale and Retail Ice Cream Manufacturers.

420, STONEY STANTON ROAD - COVENTRY

Telephone 88145

ICE CREAM FOR ALL OCCASIONS



Founded 1883

# COVENTRY CITY FOOTBALL CLUB LIMITED

President Col. The Lord Kenilworth, C.B.E. T.D.  
 Vice-Presidents: W. S. Heatley, W. Young  
 Directors: W. Erle Shanks (Chairman) W. W. Brandish (Vice-Chairman), R. B. Cole, J. R. Mead, J.P.,  
 Derrick H. Robins, F. Stringer.  
 Manager: W. Frith  
 Medical Officer: Dr. P. Coghill  
 Secretary: B. W. Hitchiner

Members of Football League, Third Division South, and Football Combination  
 Registered Office and Ground: HIGHFIELD Road, COVENTRY.  
 Telephone: Coventry 3461. Telegrams: "City Football, Coventry."



## Bantam topics . . . .

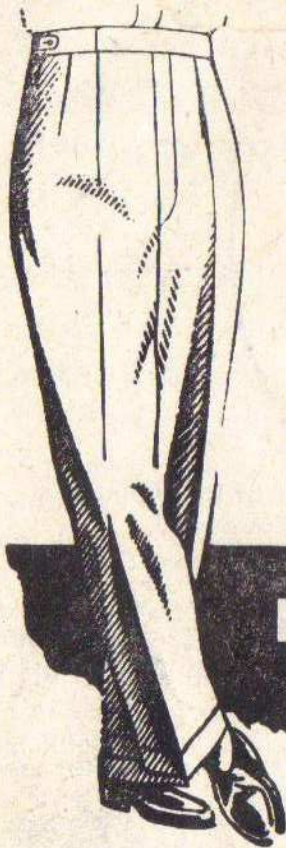
FOR the Easter programme to yield four points out of a possible six would normally be considered quite satisfactory, but we cannot disguise the fact that we had hoped, in this vital season, for maximum points from the holiday matches. This does not mean, of course, that we have been dissatisfied with the efforts of our players in these matches, as we are quite convinced it is nothing but sheer misfortune which robbed us of the points at Exeter, and supporters will have seen for themselves just how well the side is playing in the match against Shrewsbury last Tuesday. Whilst the struggle to avoid the Fourth Division is still not yet over, the unfortunate loss of

the two points at Exeter has made the task infinitely more difficult . . . . .

Cup Final Day is again fast approaching, and we are receiving the usual glut of applications for tickets. We must point out, however, that our allocation is very small indeed, and would remind our supporters that the lucky programme number scheme is run expressly to give all supporters an equal chance of a ticket for Wembley. By order of the Football Association, we are only allowed to operate the scheme to the end of March, which means that the unlucky supporter will have to wait for another chance until next season . . . . .

ALL THE LEADING CLUBS HAVE FOUND THE BETTER  
**FOOTBALL EQUIPMENT**  
 at  
**AUBREY HILL'S**  
 8, HOLBROOK LANE  
 'Phone 88878      COVENTRY      'Phone 88878  
 Suppliers of Equipment to Coventry City F.C. and  
 Leading Junior Clubs





# FOSTRIAN Supaslaks

Cut and tailored in our own workrooms from Yorkshire all wool cloths, Supaslaks give you style and quality at the lowest possible price. They're your best buy to-day.

★ 1 STAR

55/-

★★ 2 STAR

65/-

★★★ 3 STAR

75/-

One of the many outstanding values in clothing obtainable only at

## Foster Brothers

MEN'S, YOUTHS' AND BOY'S OUTFITTERS SINCE 1876

10 BROADGATE, COVENTRY.  
398 FOLESHILL ROAD, GREAT HEATH.  
1 KING WILLIAM STREET, HILLFIELDS.



football fans  
read

# NEWS OF THE WORLD

expert reports



### SCOTLAND v. ENGLAND

LONG DAY TRIP

Friday Night, 18th April

to

### GLASGOW

Return 65/9 Fare

Coventry depart 11.00 p.m.

GLASGOW CENTRAL arrive 6.55 a.m.  
(Saturday morning)

Return early Sunday morning :

Glasgow Central depart 12.40 a.m.

COVENTRY arrive 8.45 a.m.

Further information from Stations  
and Official Railway Agents.

LONDON MIDLAND



From the  
Manager . . . .

OUR Easter Holiday programme brought us a well earned four points which might easily have been six. In the game which we lost at Exeter, a perfectly good goal scored by Peter Hill was disallowed for off-side. Although he was three yards clear when he received the ball, there were two defenders between him and the goal when Ian Jamieson headed the ball towards him. The opening for the goal scored by Exeter in the last half minute of the game was only obtained as the result of Brian Shepherd being fouled when trying to go up for the ball. As to the game itself, any football that was played was played by us, and Exeter couldn't have grumbled had we taken both points. It was perfectly unfortunate for us at this stage we didn't. The pleasing thing about both the away games over the holiday was that our players showed a willingness to fight and try to play the type of football we have been seeing at Highfield Road, away from home.

Easter Monday's win at Shrewsbury after being a goal down at half-time was well deserved, and brought about as a result of good solid team work, in the second half particularly, and was followed by a most convincing win against the same side on Easter Tuesday. In this game we not only saw five goals, but a lot of good football as well, and I feel that our visitors would not have grumbled had we scored another two.

Once again we managed to steer clear of injuries, although at one time it appeared doubtful if Charlie Ashcroft, who received a buffeting at Exeter would be fit for the other two games.

Unfortunately Ray Straw was hurt in Tuesday's match, and at the time of writing these notes is a doubtful starter for today's game.

## This week's personality . . .

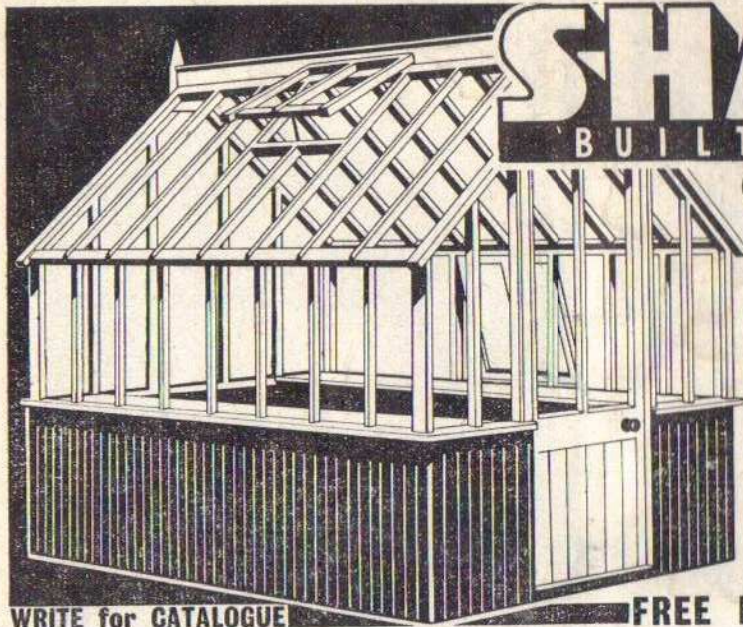


DAVID SMITH

Educated at Holymoorside County School, he played for the Doe-lea-valley Boys representative side, and after leaving school took up butchering, continuing his football with a youth team including selection for the Derbyshire Youth Side. He has been working in the pits for the past four years, and before joining Derby in September of last year, he had played for Mansfield, Chesterfield and Boston United, joining us on the 11th November, 1957.

David has four brothers, and two sisters, and his mother and father reside at Holymoorside, Nr. Chesterfield. His chief hobby is cricket.





# SHANKS

BUILT - TO - LAST  
OF COVENTRY

Joiner - made GREENHOUSES, TOOL SHEDS, CYCLE SHEDS, POULTRY HOUSES, STORE SHEDS, etc First-class workmanship throughout. Full range on show at Lockhurst Lane. Immediate delivery from stock. Free Security insurance on all easy payments.

**E. O. SHANKS & SONS LTD**

Timber Merchants and Joinery  
Manufacturers since 1905

Lockhurst Lane, Coventry

Tel. 89301

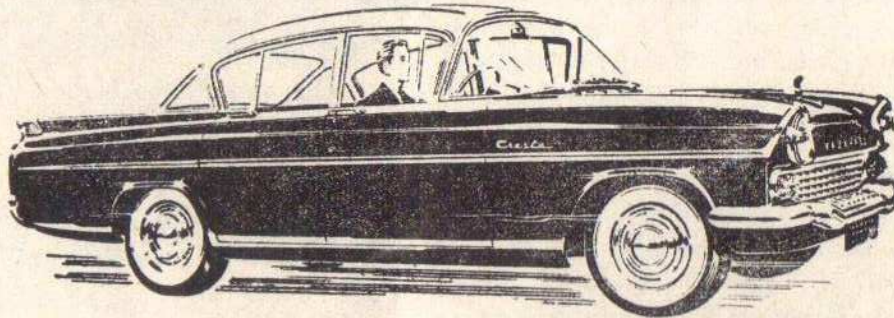
WRITE for CATALOGUE

FREE DELIVERY MIDLAND AREA

## HALF-TIME SCORES

<b>A</b> BOURNEM'TH PLYMOUTH	<b>G</b> READING GILLINGHAM	<b>M</b> BURNLEY WOLVES
<b>B</b> BRENTFORD SOUTHAMPT'N	<b>H</b> SHREWSBURY MILLWALL	<b>N</b> PRESTON N.E. ASTON VILLA
<b>C</b> COLCHESTER NEWPORT	<b>I</b> TORQUAY BRIGHTON	<b>O</b> TOTTENHAM MAN. UTD.
<b>D</b> C. PALACE SOUTHEND	<b>J</b> WALSALL ALDERSHOT	<b>P</b> W.B.A. LEICESTER
<b>E</b> NORTHAMPT'N EXETER	<b>K</b> WATFORD Q.P.R.	<b>Q</b> HUDDERSF'D DERBY
<b>F</b> NORWICH PORT VALE	<b>L</b> BIRMINGHAM LEEDS	<b>R</b> IPSWICH RES. COVENTRY RES.

## W. BRANDISH & SONS Ltd.



**VAUXHALL MAIN DEALERS**

WHITEFRIARS STREET . COVENTRY



# TODAY'S MATCH

Teams for to-day's match Saturday, April 12th, 1958

Kick-off 3.0 p.m.

## COVENTRY CITY

(Blue and White Shirts and White Knickers)

Right

**Ashcroft**

Left

Goalkeeper

**2 Harvey**

**3 Shepherd**

Right Back

Left Back

**4 Nicholas**

**5 Curtis**

**6 Jamieson**

Right Half-back

Centre Half

Left Half-back

**7 Smith**

**8 Straw**

**9 Rogers**

**10 Hill, P.**

**11 Boxley**

Right Wing

Inside Right

Centre Forward

Inside Left

Left Wing

Referee

**Mr. A. Murdoch**  
(Sheffield)



Linesmen:

**Mr P. Pike**

(Red Flag)

**F. Roberts**

(Yellow Flag)

**11 Darcy**

**10 Edwards**

**9 Kelly**

**8 Micklewright**

**7 Skull**

Left Wing

Inside Left

Centre Forward

Inside Right

Right Wing

**6 Fountain**

**5 Hudson**

**4 Clayton**

Left Half-back

Centre Half

Right Half-back

**3 Bingley**

**2 Neal**

Left Back

Right Back

Left

**Burton**

Right

Goalkeeper

## SWINDON TOWN

(Red Shirts and White Knickers)

Alterations to the above teams and announcements will be given through the Loud Speakers.

### FORTHCOMING MATCHES

SATURDAY,

APRIL 19th, 1958

## PLYMOUTH ARGYLE

Football Combination

Kick-off 3.0 p.m.

MONDAY,

APRIL 21st, 1958

## NORWICH CITY

Football League

Kick-off 6.30 p.m.



GO  
**GREYHOUND RACING!**

Interesting Programmes Presented  
under Ideal Conditions

at  
**COVENTRY STADIUM**  
every Tuesday & Friday at 7-30 p.m.  
and  
**LEICESTER STADIUM**  
every Thursday at 7-30 p.m. and  
Saturday at 6-45 p.m.

All Racing conducted under  
N.G.R.C. Rules.

'Bus and Coach Services from  
Pool Meadow.

Midland Sports Stadiums Ltd.

**THE COVENTRY THEATRE**  
AND RESTAURANT

NEXT WEEK. Evenings 7.30.  
Mats. Thurs. & Sat. at 2.30.  
**THE ROYAL BALLET**  
(Formerly Sadler's Wells Theatre Ballet)

21st APRIL, Evenings at 7.30  
Thurs. & Sat. at 5 & 8  
From the Strand Theatre, London  
after 1231 performances  
**SAILOR BEWARE**  
with **TESSIE O'SHEA**

28th APRIL, Evenings at 7.45  
**Coventry's First**  
**FESTIVAL OF MUSIC**  
World Famous Orchestras, Soloists  
and Conductors

Box Office (Phone 3141) Open 10 a.m. to 8 p.m.

**RHMS**  
COVENTRY  
**RED HOUSE MOTOR**  
**SERVICES**

Follow the "CITY" to all away  
matches by the R.H.M.S. Coaches.

Full Particulars—

HEAD OFFICE, CROMWELL STREET.  
'Phone 89004 or  
R.H.M.S. OFFICE, POOL MEADOW.  
'Phone 89006.

**A CERT BANKER . . . .**



for the best Wallpapers and Paints.

**BRIGHTWALLS (Coventry) LTD.**  
VICTORIA ST. :: 82 FAR GOSFORD ST.  
362 FOLESHILL RD. :: 35 HERTFORD ST.  
COVENTRY.

For  
**TYRES**  
consult  
**SYD. PEARSON TYRES**  
LIMITED.  
65/66, Gosford Street,  
Coventry.

FREE FITTING

'Phone 60237/8.

COAL - COKE - ANTHRACITE  
WASHED BREEZE

**SHEPPARDS**

COAL & METALS LTD.  
2, LEWIS ROAD, COVENTRY  
'Phone 60049 (2 lines)

HAULAGE CONTRACTORS

Cash Buyers of Iron and Steel  
and Metals of Every Description

ENQUIRE OUR PRICES



# WELCOME TO OUR VISITORS

WE are pleased to welcome SWINDON TOWN this afternoon. Their improvement this season has been nothing short of remarkable, for it will be recalled that they had to seek re-election last season, and are now well in the promotion hunt. The capacity of their ground is 34,000, and their gate record 32,310.



## PEN PICTURES

**BURTON (Goal)** A local player who has been with Swindon as a professional for 12 years.

**NEAL (R.B.)** Signed from Kings Lynn last close season while on transfer list of Hull City. Born in Newcastle-on-Tyne.

**BINGLEY (L.B.)** Transferred from Sheffield Wednesday in January of this year. Also played for Bolton as an amateur. A native of Sheffield.

**CLAYTON (R.H.)** Signed from Bournemouth last close season.

**HUDSON (C.H.)** Born in Havant, Hampshire, he was signed eight years ago from Portsmouth.

**FOUNTAIN (L.H.)** A native of Leeds, he was signed from Sheffield United in February 1957.

**SKULL (O.R.)** Previously played for Wolverhampton Wanderers, he was signed last close season from Headington United. A native of Swindon, he is a part-time player, and carries on his profession as a physiotherapist.

**MICKLEWRIGHT (I.R.)** Signed from Bristol City three years ago, having previously played for Bristol Rovers. Born in Birmingham.

**KELLY (C.F.)** Signed last month from Preston North End, he is a native of Scotland.

**EDWARDS (I.L.)** A native of Guildsford, he was signed from Chelsea three years ago.

**DARCY (O.L.)** Secured from Wigan Athletic in December 1956. A native of Liverpool, he previously played with Accrington Stanley.



## BIRMINGHAM & DISTRICT LEAGUE

"A" Team home to Darlaston. Lost 1-2. A harsh penalty against us, coupled with missed chances were the main reasons that both points were sacrificed, as on the day we did not deserve to lose. Scorer, Charley. Team : West, Cleaver, Cox, Kearns, Cole, Easterlow T., Robinson, Allen, Charley, McCarthy J., England.

## WARWICKSHIRE COMBINATION

"B" Team away to Birmingham City. Lost 1-3. An inexperienced team did quite well against strong opposition, as although losing 3-1, many chances were made through some good football. Scorer : Simms. Team : Griffiths, Burton, McStay, Cramp, Haywood, Judge, Oakley, Morris, Simms, Haley, Cross B.



For "STRAIGHT SHOOTING"

and the best "KICK-OFF"

get your new or used car at

## MORTON'S GARAGE :: BINLEY ROAD

HUMBER — HILLMAN — COMMER DEALERS

Twenty-four Hour Service for Petrol and Accessories

### FOOTBALL LEAGUE. DIV. III (South)

Month	Date	Home	Away	Gate
Feb.				
	1	Torquay United	A 0 1	6,400
	8	Brentford	H 0 0	9,361
	15	(5) Colchester U.	A 1 4	8,613
	22	Southampton	A 1 7	11,196
Mar.				
	1	Brighton	H 2 2	9,073
	5	Norwich	A 1 1	18,458
	8	Southend	A 1 5	9,881
	10	Walsall	A 1 4	6,600
	15	Q.P.R.	H 1 1	7,646
	17	Aldershot	H 6 0	5,830
	24	Walsall	H 4 1	8,152
	29	Plymouth Argyle	H 1 1	11,653
April				
	5	Exeter City	A 0 1	5,304
	7	Shrewsbury Town	A 3 1	8,685
	8	Shrewsbury Town	H 5 0	12,489
	12	Swindon	H	
	19	Aldershot	A	
	21	Norwich City	H	
	26	Gillingham	H	
	30	Gillingham	A	
May				
	3	F.A. Cup Final		

### LEAGUE III. (South)

	P.	W.	D.	L.	F.	A.	P.
Brighton	40	22	10	8	78	58	54
Plymouth	41	23	7	11	60	41	53
Reading	43	20	12	11	74	49	52
Swindon	42	18	14	10	75	49	50
Brentford	41	21	8	12	74	53	50
Norwich C.	41	17	15	9	65	62	49
Southampton	41	19	9	13	101	64	47
Southend	39	17	10	12	74	47	44
Newport County	41	16	12	13	66	57	44
Bournemouth	40	19	6	15	72	66	44
Colchester	40	15	12	13	65	69	42
Q.P.R.	41	15	12	14	53	60	42
Port Vale	41	16	9	16	61	43	41
Crystal Palace	41	13	13	15	59	59	39
Watford	41	12	15	14	55	65	39
Northampton	40	16	6	18	71	68	38
Shrewsbury	40	14	10	16	47	61	38
<b>COVENTRY CITY</b>	41	12	11	18	55	74	35
Aldershot	41	10	13	18	52	85	33
Walsall	42	12	8	22	53	70	32
Exeter City	41	10	9	22	54	85	29
Gillingham	40	11	7	22	45	71	29
Millwall	42	10	8	24	60	86	28
Torquay	40	9	10	21	42	69	28

For . . .

**Air, Rail, Road or Sea Travel**

Also Parties arranged.

You can rely on

**FRAMES TOURS LTD.**

(Est. 1881)

Your nearest Branch is

**opp. GOSFORD GREEN**

Also at

BROADGATE HOUSE and  
334, FOLESHILL ROAD.

**A SAFE BET ALWAYS**

for

**VALUE . . .**

**QUALITY . . .**

**AND DIVIDEND**

at the

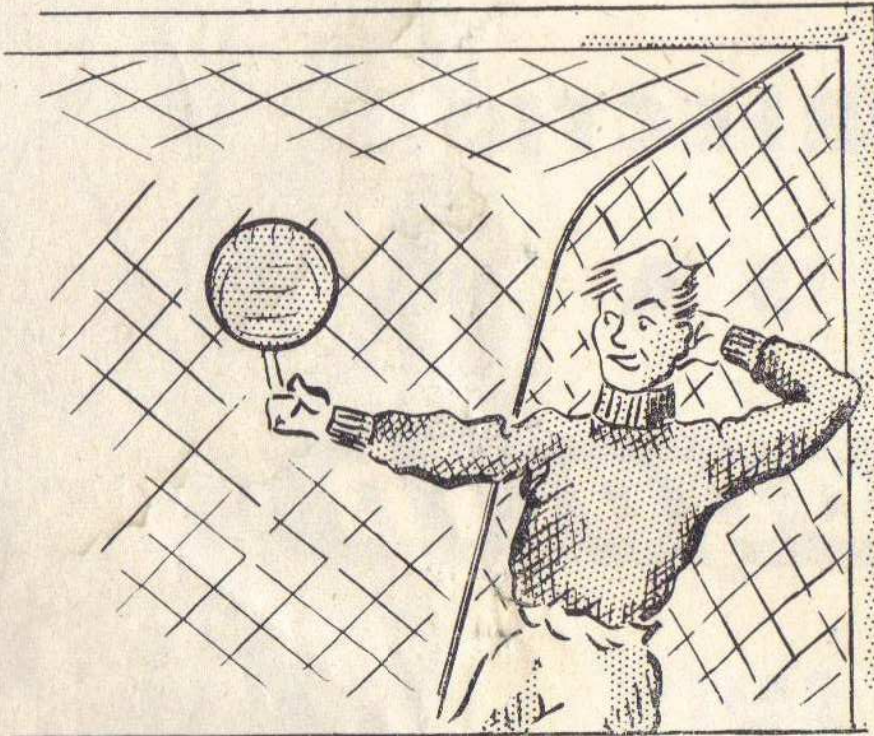
**COVENTRY & DISTRICT  
CO-OPERATIVE SOCIETY LTD.**

Corporation Street - Coventry.

(Tel.: 40331)



**HE HAS NO  
WORRIES**



**he 'Saves' with**

the

**COVENTRY**  
— PERMANENT —  
**ECONOMIC**  
BUILDING SOCIETY

19 & 20 HIGH STREET, COVENTRY

“ THERE IS NO FINER SAVINGS SERVICE ”



**THE GOAL  
OF  
PERFECTION**

**IS A**

***hogarth***

**SUIT**

**MADE TO MEASURE  
from £11.5.0**

**READY TO WEAR  
from £9.15.0**



**GENTLEMEN'S TAILORING DEPARTMENTS  
CORPORATION STREET AND WALSGRAVE ROAD COVENTRY**

F. GORDON REAVES LTD.

GRAPHIC PRESS, SACKVILLE ST., COVENTRY.